


Mouse VEGF164 Protein, His tag

Cat #: PRP1301

Size: 5 µg/20 µg/100 µg/1 mg

Product Information

	Product Name: Mouse VEGF164 Protein, His tag		
REF	Catalog Number: PRP1301	LOT	Lot Number: Refer to product label
	Purity: > 99% as determined by SDS-PAGE		
	Storage: Store at -20°C		Preparation method: E. coli
	Shipping: The product is shipped at ambient temperature.		

Background: Mouse Vascular endothelial growth factor (VEGF or VEGFA), is a potent mediator of both angiogenesis and vasculogenesis in the fetus and adult. It is a member of the PDGF/VEGF growth factor family that is characterized by a cystine knot structure formed by eight conserved cysteine residues. Alternately spliced isoforms of 120, 164 and 188 aa found in mouse. VEGF binds the type I transmembrane receptor tyrosine kinases VEGF R1 (also called Flt1) and VEGF R2 (Flk/KDR) on endothelial cells. Although affinity is highest for binding to VEGF R1, VEGF R2 appears to be the primary mediator of VEGF angiogenic activity. VEGF is required during embryogenesis to regulate the proliferation, migration, and survival of endothelial cells. It may play a role in increasing vascular permeability during lactation, when increased transport of molecules from the blood is required for efficient milk protein synthesis.

Sequence: Amino acid sequence derived from Mouse VEGF164 (Ala27-Arg190) (Q00731-2) was expressed with 6×His tag.

Protein length: The recombinant Mouse VEGF164 consists of 165 amino acids and predicts a molecular mass of 19.4 kDa.

Biological Activity: Testing in progress.

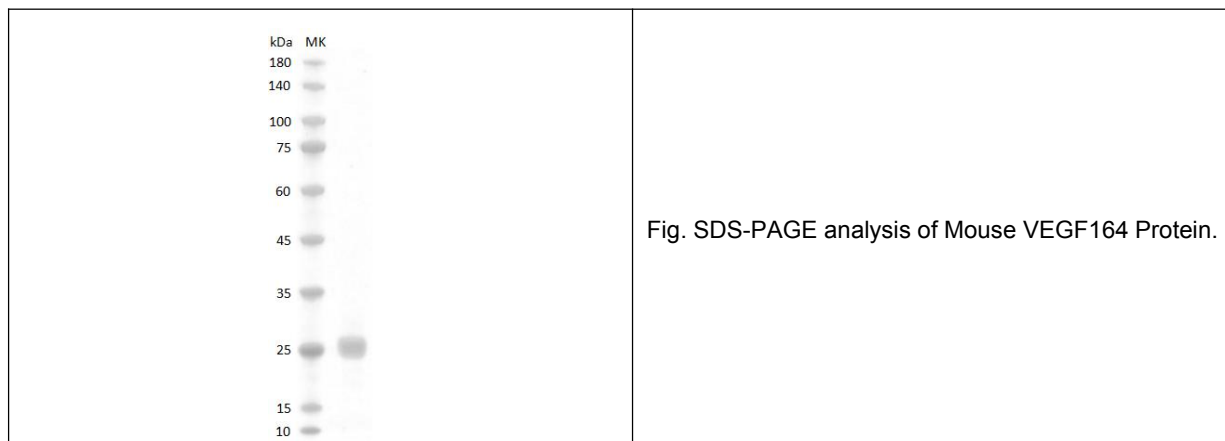
Endotoxin: < 0.1 EU per µg of the protein as determined by the LAL method.

Formulation: Lyophilized from sterile 20mM Tris, 150mM NaCl, pH8.5.

Storage Instructions: Lyophilized protein product should be stored desiccated below -20°C. Upon reconstitution, the protein should be stored at 4°C between 2-7 days and for future use below -20°C. For long term storage it is recommended to add a carrier protein (0.1% HSA or BSA). Please prevent freeze-thaw cycles.

Usage notes: Always centrifuge tubes before opening. It is recommended to reconstitute the lyophilized protein using the

buffer we provided not less than 100 µg/ml, which can then be further diluted to other aqueous solutions.



Note: The product listed herein is for research use only and is not intended for use in human or clinical diagnosis. Suggested applications of our products are not recommendations to use our products in violation of any patent or as a license. We cannot be responsible for patent infringements or other violations that may occur with the use of this product.